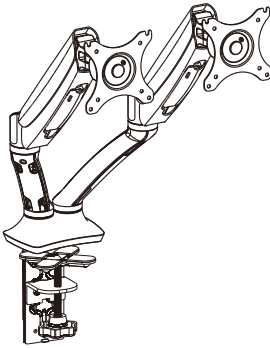





Item No.: 50905


Installation guide






M4X12MM
A (8PCS)



M5X12MM
B (8PCS)


M6X12MM
C (3PCS)

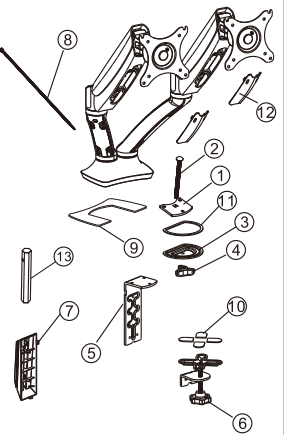

M6X10MM
D (2PCS)


Φ 6.5X Φ 13X1.8
E (16PCS)


4X4 Allen key
F (1PCS)


5X5 Allen key
G (1PCS)

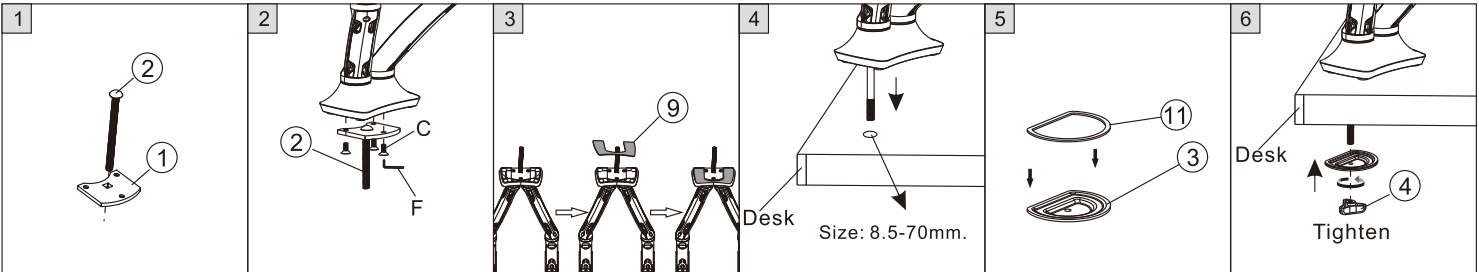
①	Bottom support 1	1PCS	1
②	Screw	1PCS	
③	Washer	1PCS	
④	Butterfly knob	1PCS	
⑤	Bottom support 2	1PCS	2
⑥	Knob	1PCS	
⑦	Cable cover 1	1PCS	3
⑧	Nylon ties	10PCS	
⑨	Anti-slip rubber 1	1PCS	
⑩	Anti-slip rubber 2	4PCS	
⑪	Anti-slip rubber 3	1PCS	
⑫	Cable cover 2	2PCS	
⑬	M6 box wrench	1PCS	



STEP2-B

Option 2: Grommet attachment

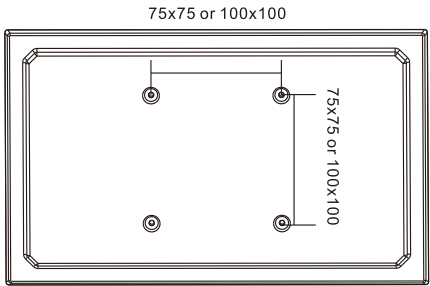
▲ For table thickness:25-100mm



STEP1

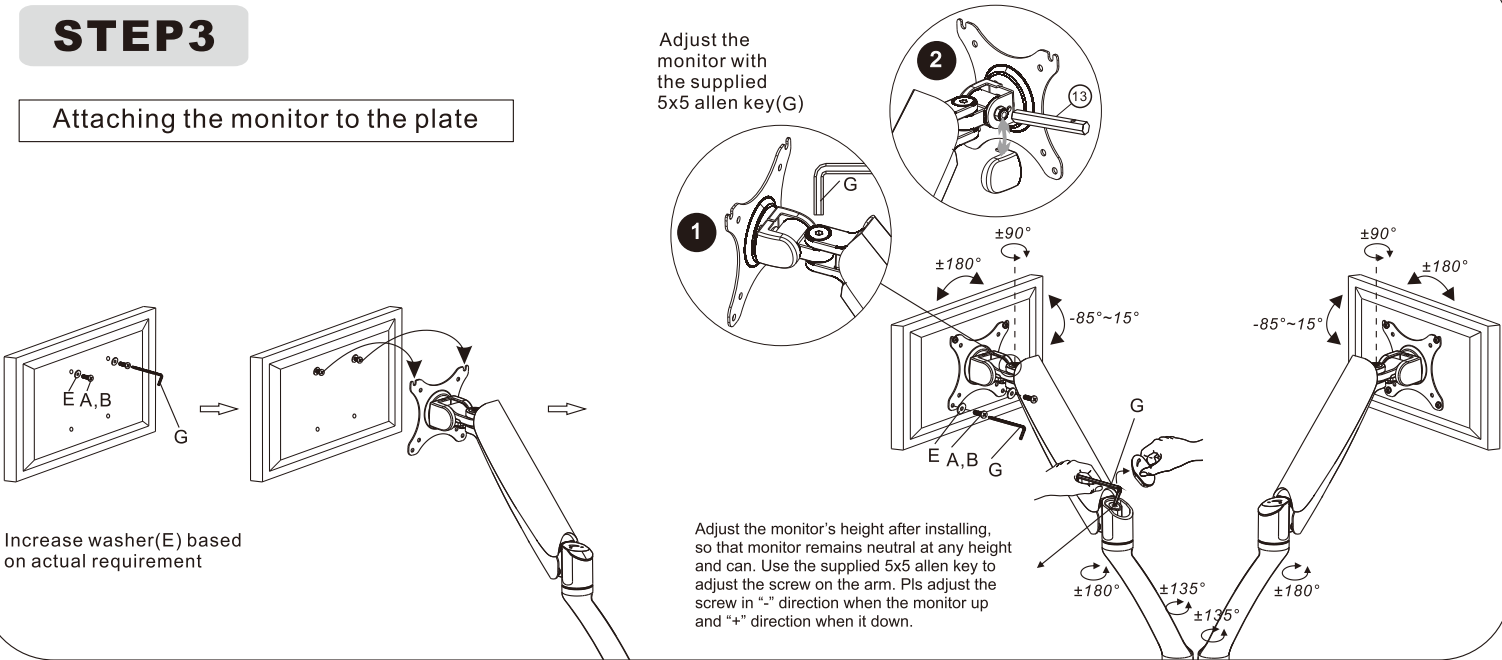
Monitor preparation prior to installation

- 1.Make sure there are VESA holes 100x100mm or 75x75mm in the monitor. These holes are required for installation.
- 2.Remove the original fixed base of monitor.Be careful not to scratch the screen.



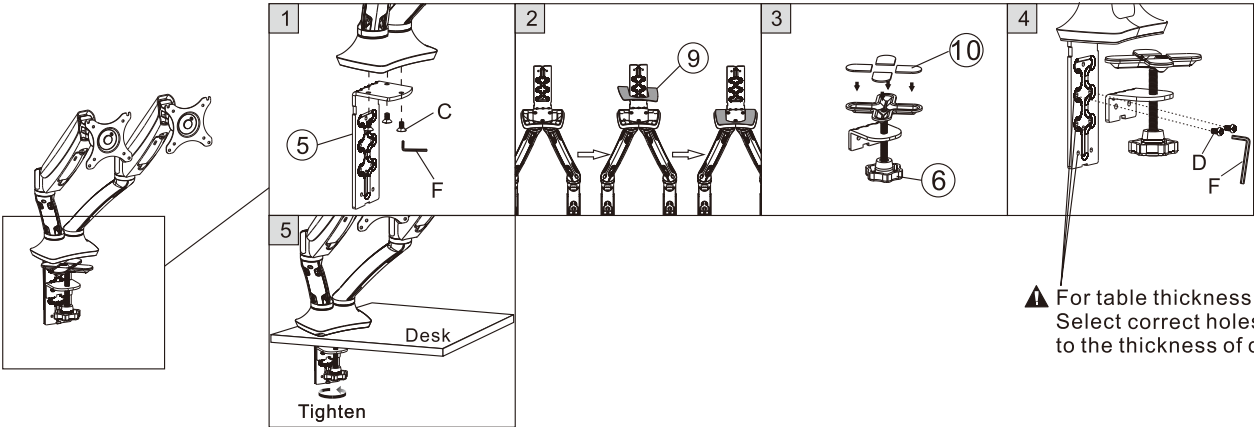
STEP3

Attaching the monitor to the plate



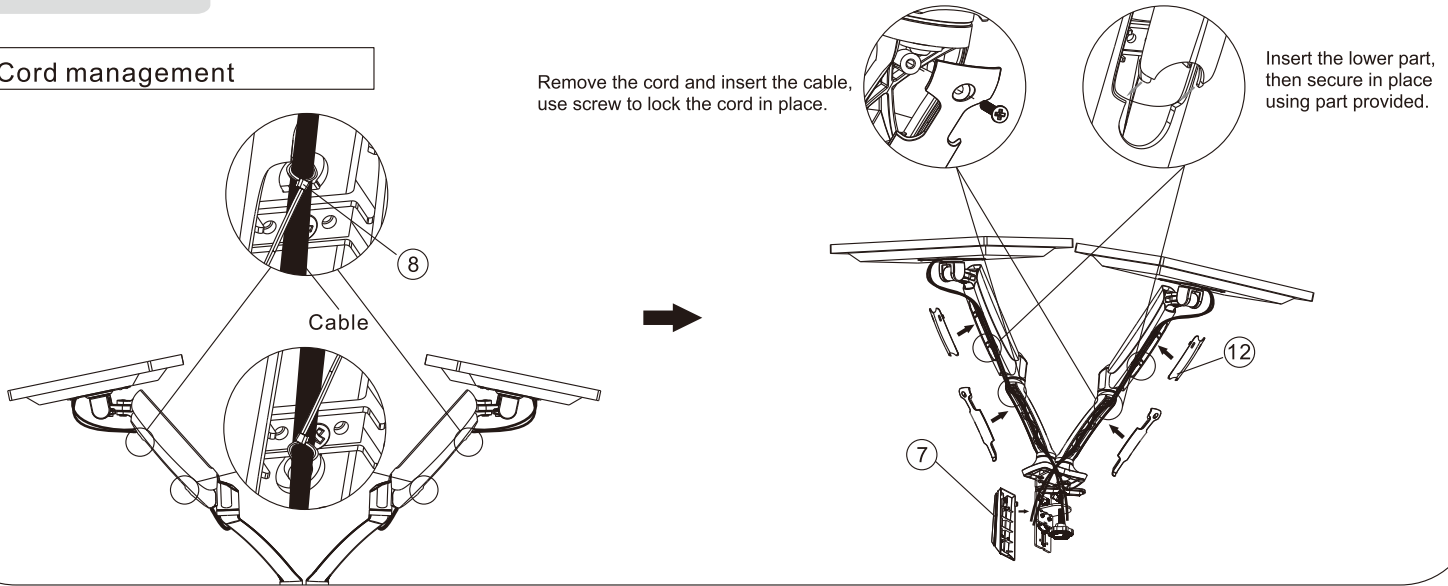
STEP2-A

Option 1: Clamp attachment



STEP4

Cord management





CAUTION

This product contains small items that could be a choking hazard if swallowed. Keep these items away from young children.

- Make Sure these instructions are read and completely understood before attempting installation. If you are unsure of any part of this installation, please contact a professional installer for assistance.
- The desk or mounting surface must be capable of supporting the combined weight of the mount and the display, otherwise the structure must be reinforced.
- Please check joint parts every two months making sure the screws have not become loose.

This product was designed to be installed on the desk. Before installing, make sure the mount will support the combined load of the equipment and hardware. Never exceed the maximum load capacity 9 KG or it may result in product failure or personal injury.

Note: this product is intended for indoor use. Use of this product outdoors could lead to product failure or personal injury.

Warning: This product contains high pressure gas spring parts. Please avoid fire and high temperature. Do not disassembled which may lead to unexpected personal injury.
To ensure the performance of the gas spring it is suggested to adjust the upper arm(with spring) several times or at least once per month.